

PARTS CATALOG

BC400P-SS02-QM-S

TOSHIBA

Nov. , 4, 2022

Index

HTU	HOW TO USE PARTS CATALOG
SNL	Destination List
A1	ASSEMBLY LOCATION DIAGRAM
A2	OPTION PARTS CATALOG LIST
100	EXTERNAL COVERS
101	INTERNAL COMPONENTS 1
102	INTERNAL COMPONENTS 2
103	INTERNAL COMPONENTS 3
104	INTERNAL COMPONENTS 4
110	OPERATION PANEL ASSEMBLY
200	PRINT MODULE
201	PRINthead ASSEMBLY
202	VALVE ASSEMBLY
203	ROLL DRIVE ASSEMBLY
204	INK TANK HOLDER ASSEMBLY
300	TRANSPORT ASSEMBLY
301	PAPER GUIDE ASSEMBLY
900	TOOL TABLE

Figure HTU HOW TO USE PARTS CATALOG

1.Parts Catalog Configuration

In Parts Catalog, entire product is divided into some configurations ("figures" called) by function, position, etc. Every figure consists of a pair of the explosion diagram(s) and service parts (spare parts) list(s).

Unique figure nos. are assigned to all the figures and they are in ascending order.

In a figure, the reference number called " Key No." is assigned for the service parts. The Key No. makes correlation between illustrations and service parts in the service parts list.

2.Assembly Location Diagram

Assembly Location Diagram shows the locations of the key components and main units.

In Assembly Location Diagram , figure nos. are surrounded by ovals.

3.Service Parts Lists

(1)FIGURE & KEY NO.

Figure No. and Key Nos. are described.

(2)PART NUMBER

Service part numbers are described.

The items marked with "NPN" are not set up as service parts, which are not supplied to the field.

(3)RANK

Disused

(4)QTY

Sum of number of parts in a figure.

When some item of service part is marked with "NPN" , "QTY" column is filled in with "RF".

(5)DESCRIPTION

Name of service parts are described.

(6)SERIAL NUMBER / REMARKS

Symbols of the electrical components, power supply voltage for different specifications, destination, etc. are described.

When an applicable range of the service parts is specified by the machine serial number, the serial number is described.

"DP" stands for Durable Parts or periodic replacement parts. Key No. for DP in the explosion diagram is surrounded with rectangular.

Figure SNL Destination List

No.	Model Name	Destination
1	BC400P	F014K00001-

Figure A1 ASSEMBLY LOCATION DIAGRAM

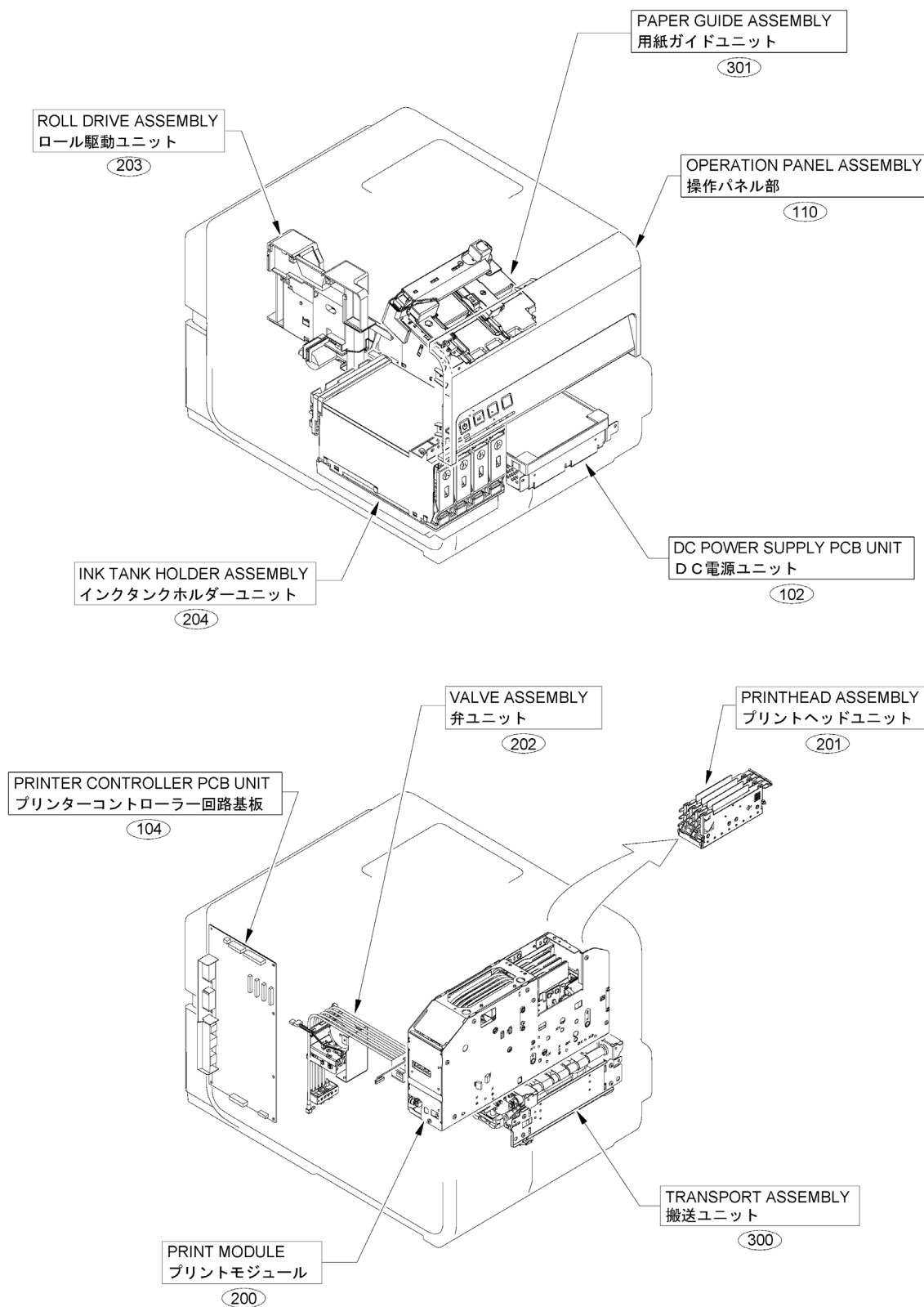


Figure A2 OPTION PARTS CATALOG LIST

This is the table of the machine's options whose parts catalog is issued.
本機のオプションで、パーツカタログが発行されている機種の一覧である。

No.	Model Name(English)	Model Name(Japanese)
1	BC204-F-QM-S	BC204-F-QM-S

Figure 100 EXTERNAL COVERS

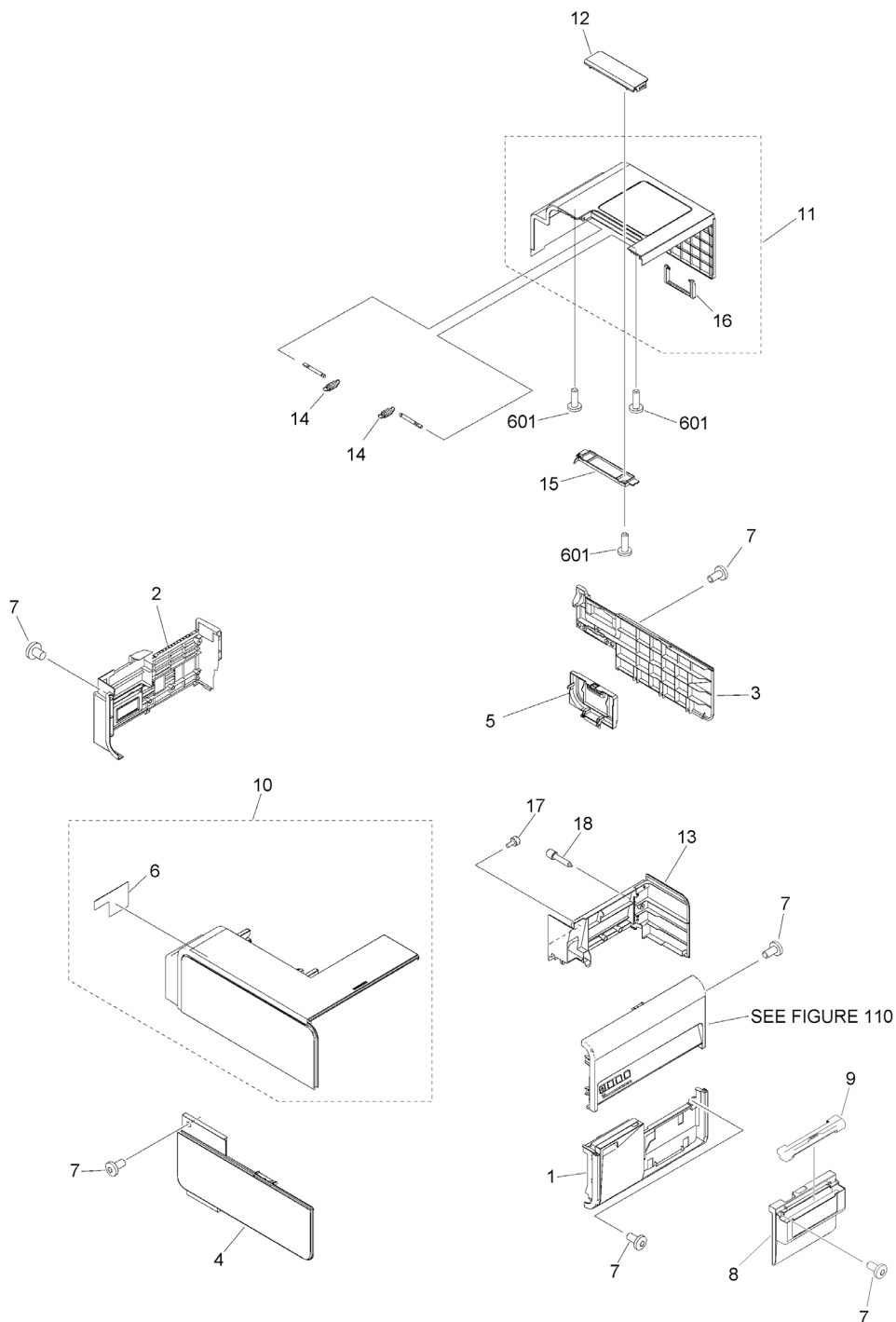


FIGURE & KEY NO.	PART NUMBER	R A N K	QTY	DESCRIPTION	SERIAL NUMBER /REMARKS
100	NPN		RF	EXTERNAL COVERS	
1	7FM90116000		1	COVER, INK TANK	
2	7FM90054000		1	COVER, BOTTOM, REAR	
3	7FM90055000		1	COVER, BOTTOM, RIGHT	
4	7FM90053000		1	COVER, BOTTOM, LEFT	
5	7FM90056000		1	COVER, CARTRIDGE	
6	N/A		1	LABEL, CAUTION	
7	N/A		10	SCREW, ROUND, M3X6	
8	7FM90051000		1	COVER, CUTTER	
9	7FM90052000		1	CAP, CUTTER	
10	7FM90114000		1	BASE COVER UNIT, TOP	
11	7FM90113000		1	ROLL COVER UNIT	
12	7FM90060000		1	COVER, JOINT	
13	7FM90115000		1	COVER, MAINTENANCE	
14	7FM90128000		2	SPRING, TENSION	
15	7FM90061000		1	COVER, JOINT SUB	
16	7FM90062000		1	HANDLE, COVER	
17	7FM90206000		1	SCREW, FIXED, M3X8	
18	7FM90207000		1	SCREW, FIXED, M3X6	
601	N/A		9	SCREW, TAPPING, M3X10	

Figure 101 INTERNAL COMPONENTS 1

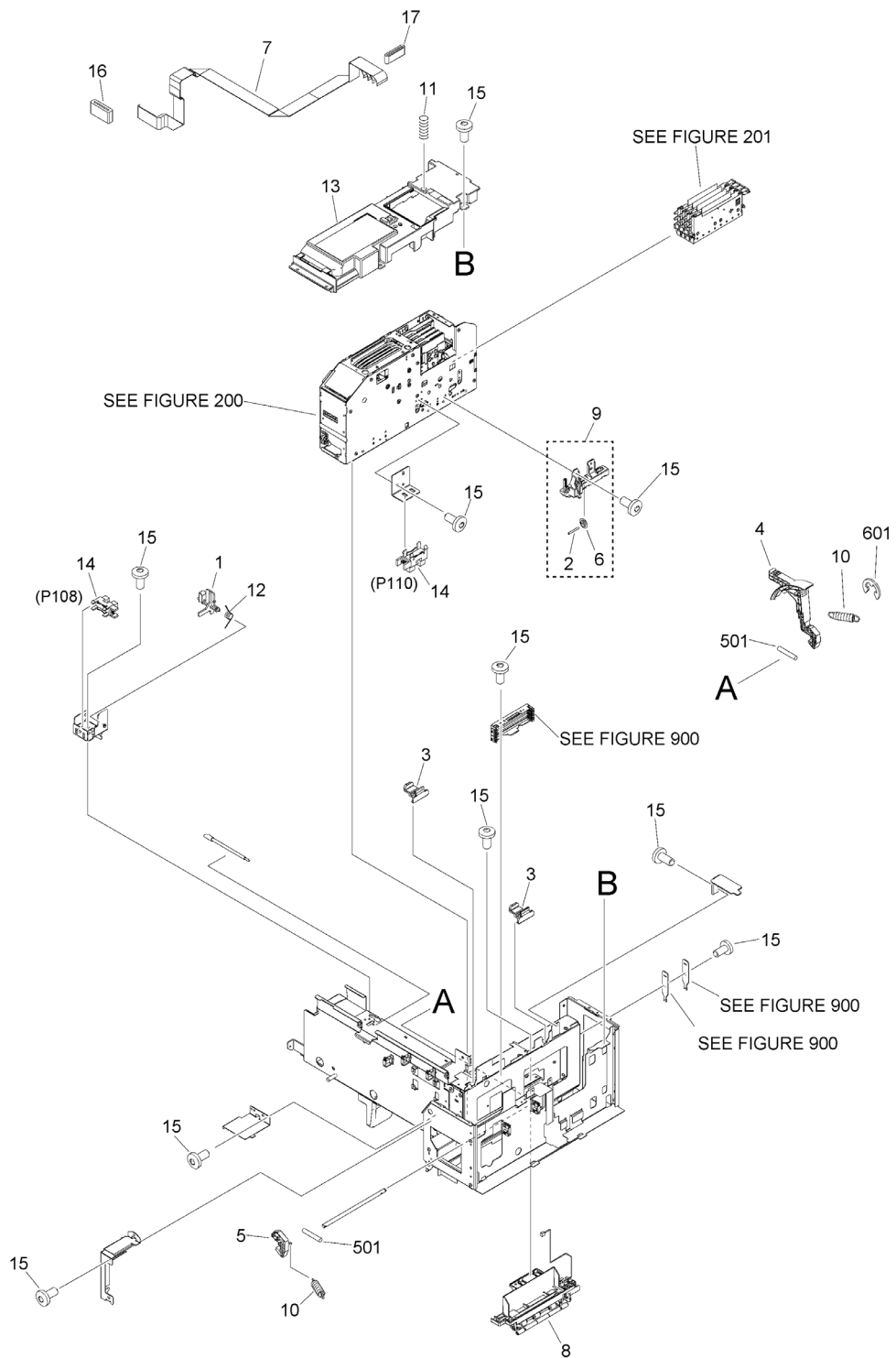


FIGURE & KEY NO.	PART NUMBER	R A N K	QTY	DESCRIPTION	SERIAL NUMBER /REMARKS
101	NPN		RF	INTERNAL COMPONENTS 1	
1	7FM90014000		1	FLAG, COVER SENSOR	
2	7FM90134000		3	SPRING, TENSION	
3	7FM90023000		2	SLIDER	
4	7FM90024000		1	LEVER, OPENER, UPPER	
5	7FM90025000		1	HOOK	
6	7FM90001000		3	ROWEL	
7	7FM90078000		1	CABLE, FLEXIBLE FLAT	
8	7FM90082000		1	ROTATION DETECT UNIT	
9	7FM90083000		1	ROWEL UNIT	
10	7FM90129000		2	SPRING, TENSION	
11	7FM90130000		1	SPRING, COMPRESSION	
12	7FM90132000		1	SPRING, TORSION	
13	7FM90065000		1	COVER, UPPER	
14	7FM90153000		2	IC, PHOTO INTERRUPTER	P108, P110
15	N/A		12	SCREW, ROUND, M3X6	
16	N/A		1	CORE, FERRITE	
17	N/A		1	CORE, RING FERRITE	
501	N/A		2	PIN, DOWEL	
601	N/A		1	RING, E	

Figure 102 INTERNAL COMPONENTS 2

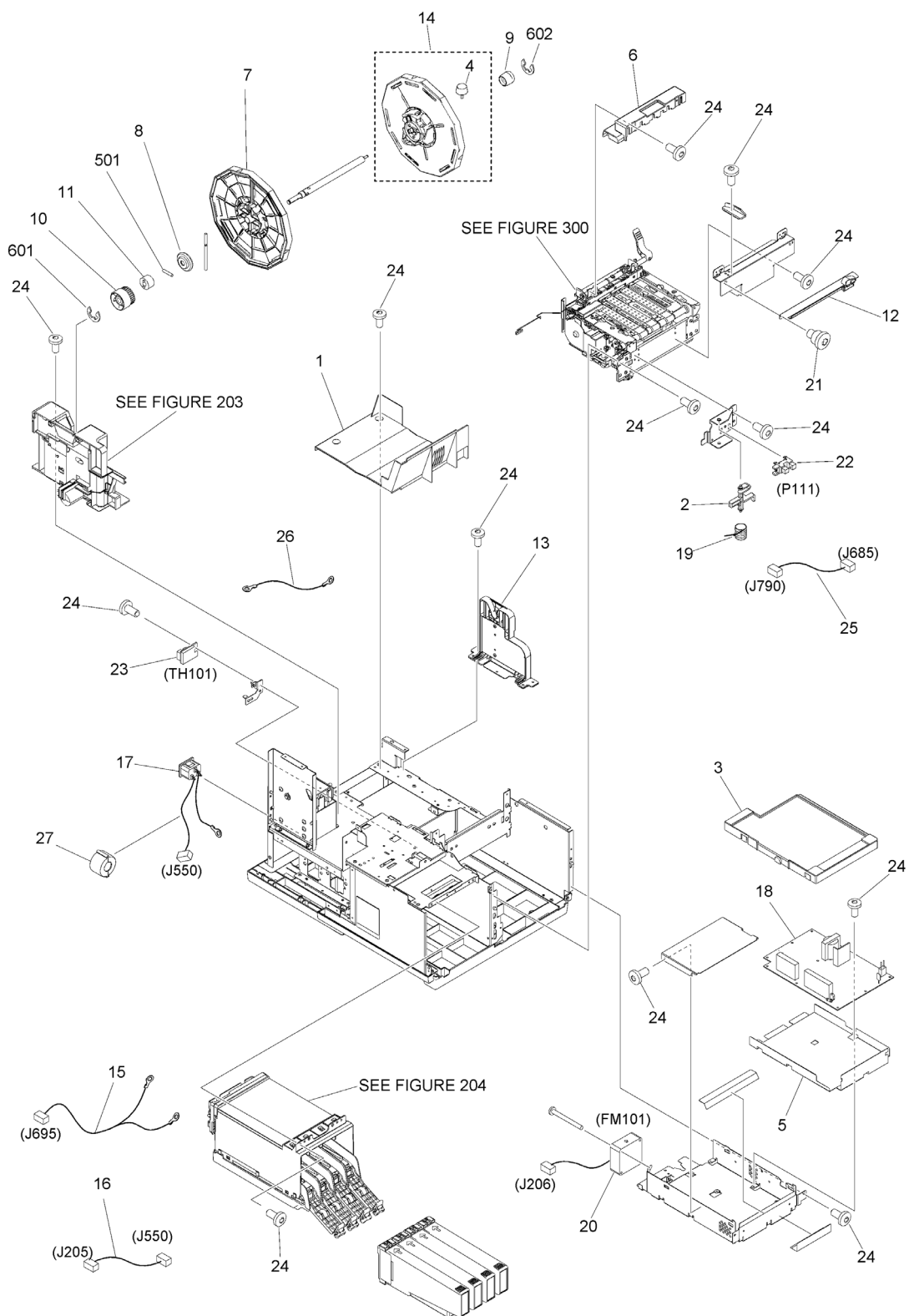


FIGURE & KEY NO.	PART NUMBER	RANK	QTY	DESCRIPTION	SERIAL NUMBER /REMARKS
102	NPN		RF	INTERNAL COMPONENTS 2	
1	7FM90015000		1	TRAY, ROLL	
2	7FM90017000		1	FLAG, INK TANK COVER SENSOR	
3	7FM90018000		1	COVER, POWER SUPPLY	
4	7FM90205000		1	SCREW, FIXED, M4X10	
5	7FM90019000		1	SHEET, POWER SUPPLY	
6	7FM90057000		1	COVER, PINCH	
7	7FM90030000		1	GUIDE, ROLL, LEFT	
8	7FM90031000		1	CAP, ROLL SHAFT, 1	
9	7FM90032000		1	CAP, ROLL SHAFT, 2	
10	7FM90033000		1	GEAR, 28T	
11	7FM90037000		1	LIMITER, TORQUE	
12	7FM90047000		1	FRAME, HAND CUTTER	
13	7FM90084000		1	SPOOL, SUPPORT, LIFT, UNIT	
14	7FM90203000		1	ROLL GUIDE UNIT	
15	7FM90097000		1	HARNESS, INK OVER	J695
16	7FM90092000		1	CABLE, AC RELAY	J205, J550
17	7FM90093000		1	CABLE, AC INLET	J550
18	7FM90120000		1	DC POWER SUPPLY PCB UNIT	
19	7FM90133000		1	SPRING, TORSION	
20	7FM90147000		1	FAN	FM101
21	7FM90012000		2	SCREW, STEPPED, M3X3.1	
22	7FM90153000		1	IC, PHOTO INTERRUPTER	P111
23	7FM90154000		1	SENSOR, HUMIDITY	TH101
24	N/A		10	SCREW, ROUND, M3X6	
25	7FM90101000		1	HARNESS, TANK DOOR	J685, J790
26	7FM90103000		1	CABLE, GROUNDING	
27	N/A		1	CORE, FERRITE	
501	N/A		1	PIN,DOWEL	
601	N/A		1	RING, E	
602	N/A		1	RING, E	

Figure 103 INTERNAL COMPONENTS 3

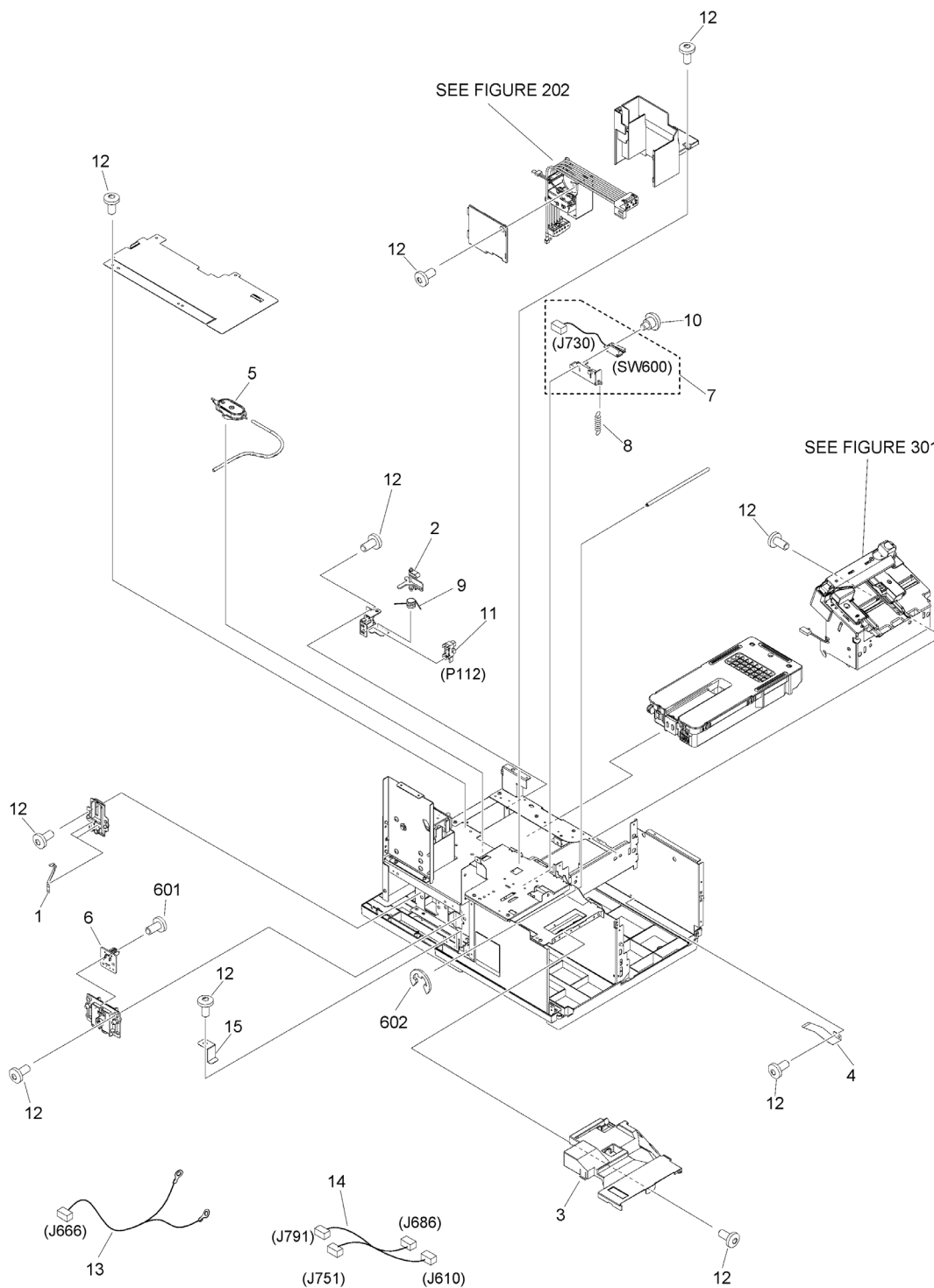


FIGURE & KEY NO.	PART NUMBER	R A N K	QTY	DESCRIPTION	SERIAL NUMBER /REMARKS
103	NPN		RF	INTERNAL COMPONENTS 3	
1	7FM90009000		2	PLATE, TRAY ELECTRODE	
2	7FM90014000		1	FLAG, COVER SENSOR	
3	7FM90016000		1	COVER, CONNECTOR	
4	7FM90020000		1	PLATE, GROUNDING	
5	7FM90106000		1	INK EJECT GUIDE UNIT	
6	7FM90074000		1	PCB, CARTRIDGE	
7	7FM90094000		1	CABLE, INTERLOCK	SW600, J730
8	7FM90131000		1	SPRING, TENSION	
9	7FM90132000		1	SPRING, TORSION	
10	7FM90012000		1	SCREW, STEPPED, M3X3.1	
11	7FM90153000		1	IC, PHOTO INTERRUPTER	P112
12	N/A		10	SCREW, ROUND, M3X6	
13	7FM90100000		1	HARNESS, CARTRIDGE FULL	J666
14	7FM90102000		1	HARNESS, CARTRIDGE DOOR	J610, J686, J751, J791
15	7FM90013000		2	PLATE, INK SENSOR	
601	N/A		2	SCREW, TAPPING, M3X10	
602	N/A		1	RING, E	

Figure 104 INTERNAL COMPONENTS 4

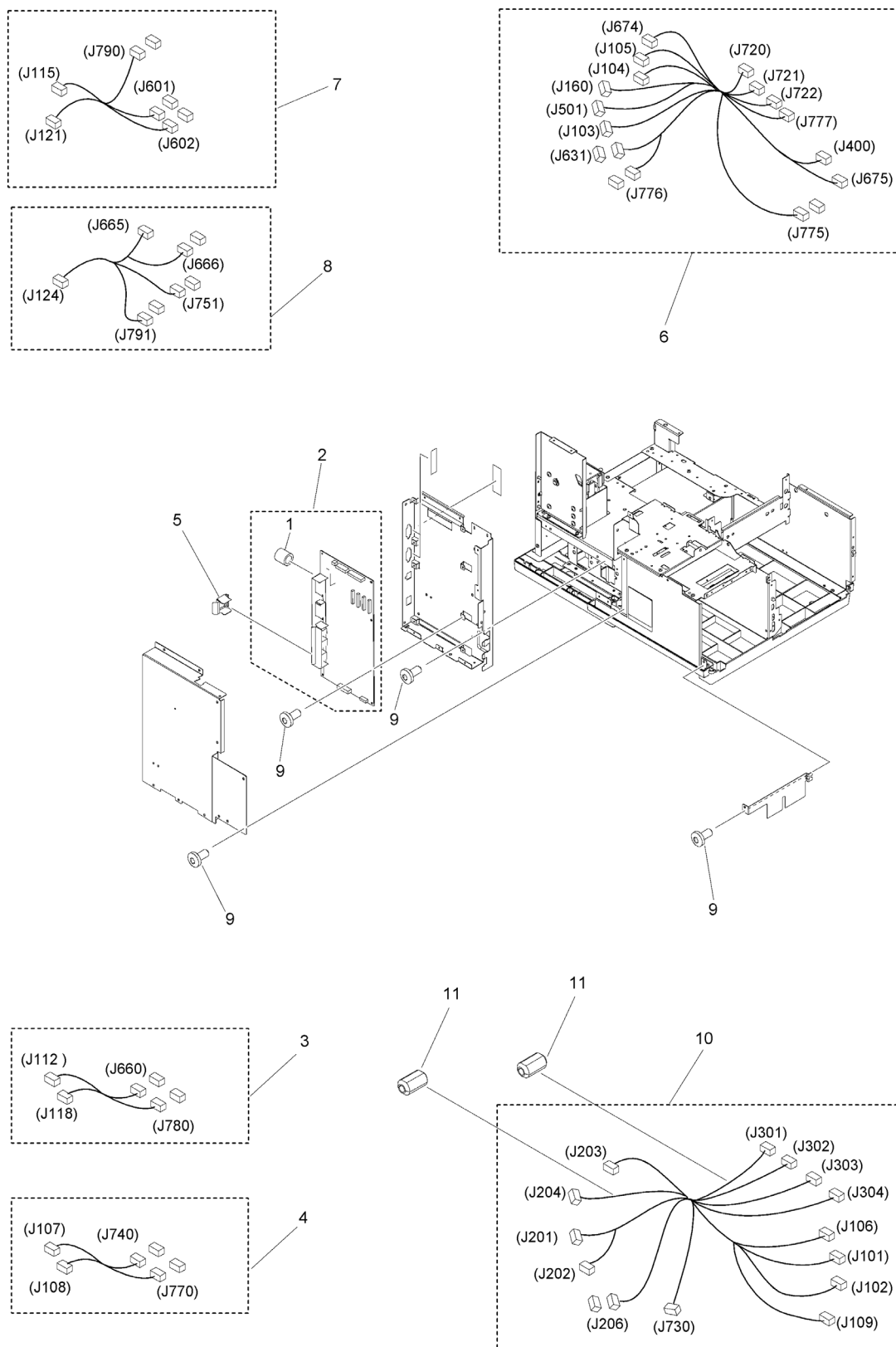


FIGURE & KEY NO.	PART NUMBER	RANK	QTY	DESCRIPTION	SERIAL NUMBER /REMARKS
104	NPN		RF	INTERNAL COMPONENTS 4	
1	7FM90022000		1	CAP, TUBE	
2	7FM90204000		1	PRINTER CONTROLLER PCB UNIT	
3	7FM90095000		1	HARNESS, PAPER SENSOR RELAY	J112, J118, J660, J780
4	7FM90117000		1	HARNESS, FEED RELAY	J107, J108, J740, J770
5	7FM90050000		1	PLATE, GROUNDING	
6	7FM90096000		1	HARNESS, FRAME, UPPER	J103, J104, J105, J160, J400, J501, J631, J674, J675, J720, J721, J722, J775, J776, J777
7	7FM90098000		1	HARNESS, OPTION RELAY	J115, J121, J601, J602, J790
8	7FM90099000		1	HARNESS, CARTRIDGE	J124, J665, J666, J751, J791
9	N/A		10	SCREW, ROUND, M3X6	
10	7FM90091000		1	DC POWER SUPPLY HERNESS	J101, J102, J106, J109, J201, J202, J203, J204, J206, J301, J302, J303, J304, J730
11	N/A		2	CORE, FERRITE	

Figure 110 OPERATION PANEL ASSEMBLY

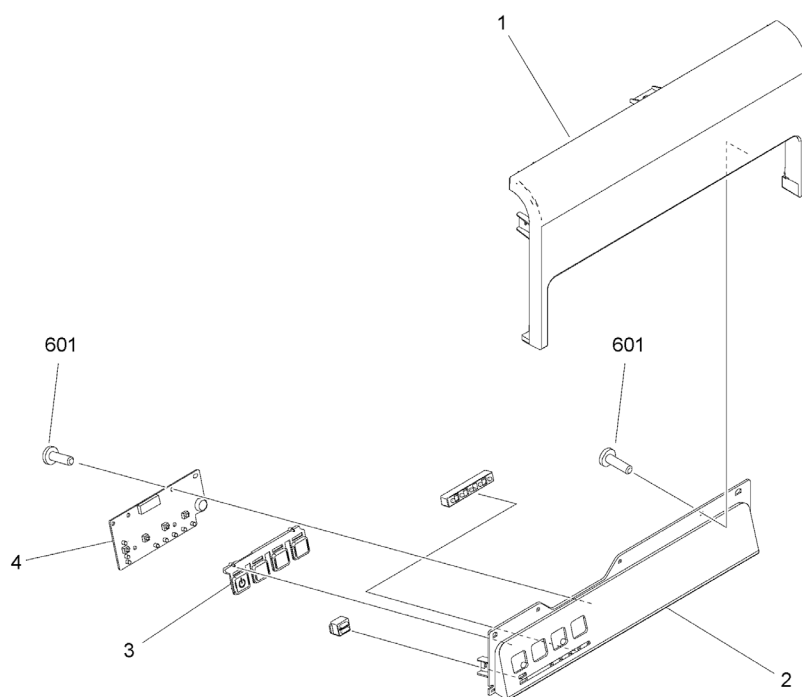


FIGURE & KEY NO.	PART NUMBER	R A N K	QTY	DESCRIPTION	SERIAL NUMBER /REMARKS
110	7FM90111000		1	OPERATION PANEL ASSEMBLY	
1	7FM90059000		1	COVER, TOP, FRONT	
2	7FM90058000		1	COVER, CONTROL PANEL	
3	7FM90112000		1	KEY TOP, OPERATION PANEL	
4	7FM90077000		1	CONTROL PANEL PCB ASS'Y	
601	N/A		9	SCREW, TAPPING, M3X10	

Figure 200 PRINT MODULE

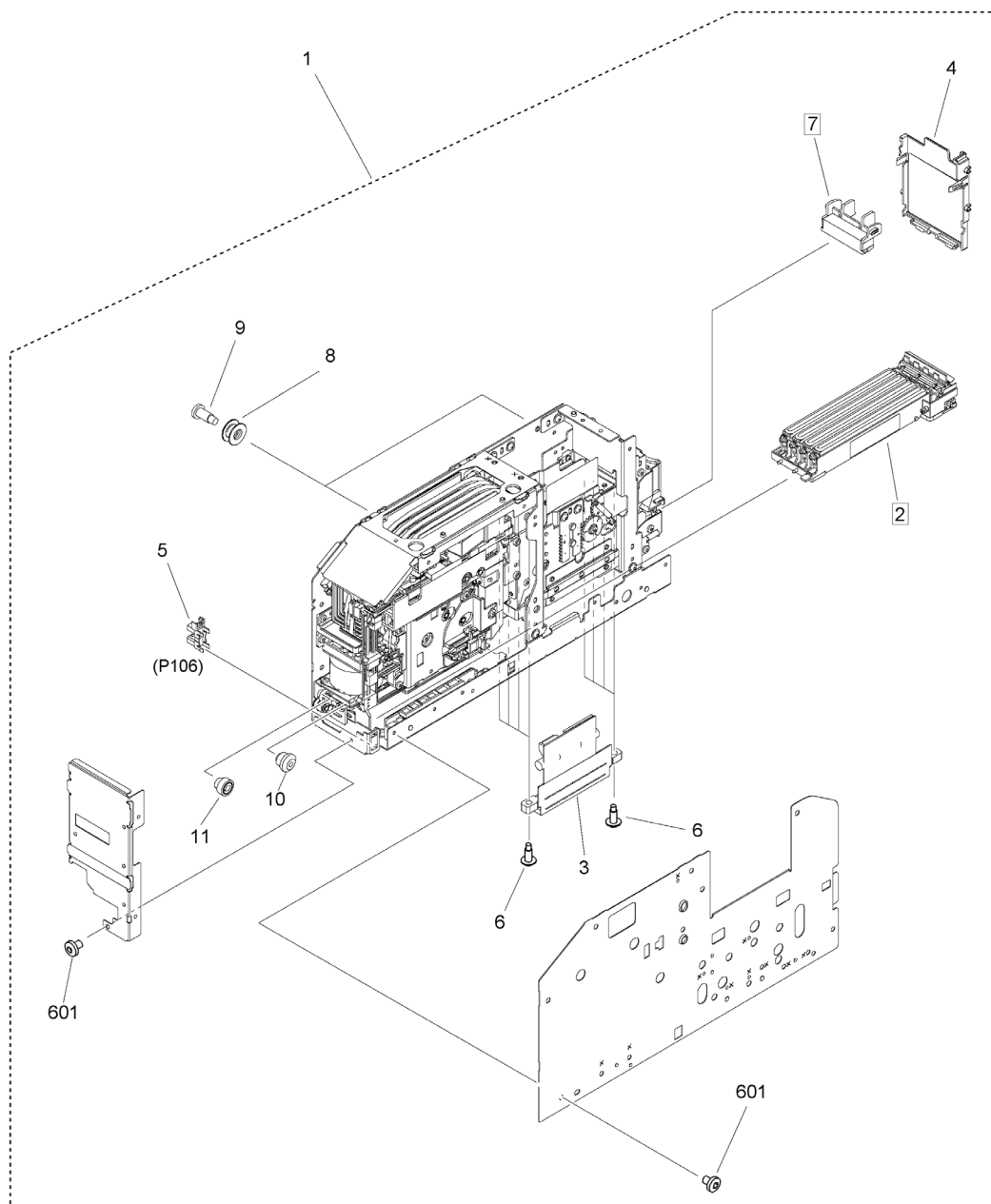


FIGURE & KEY NO.	PART NUMBER	RANK	QTY	DESCRIPTION	SERIAL NUMBER /REMARKS
200	NPN		RF	PRINT MODULE	
1	7FM90144000		1	PRINT MODULE	
2	7FM90142000		1	PURGE UNIT	[DP]
3	7FM90071000		4	PRINTHEAD PCB UNIT	
4	7FM90063000		1	COVER, PRINT MODULE	
5	7FM90153000		1	IC, PHOTO INTERRUPTER	P106
6	7FM90005000		8	SCREW, FIXING, PCB UNIT	
7	7FM90105000		1	BLADE CLEANER UNIT	[DP]
8	7FM90026000		2	SPACER	
9	7FM90148000		2	SCREW, STEPPED, M3	
10	7FM90123000		1	GEAR, 17T/15T	
11	7FM90127000		1	GEAR, 18T	
601	N/A		4	SCREW,MACH.,TRUSS HEAD,M3X4	

Figure 201 PRINthead ASSEMBLY

NOTE : When replacing each print head, replace Key No. 2.

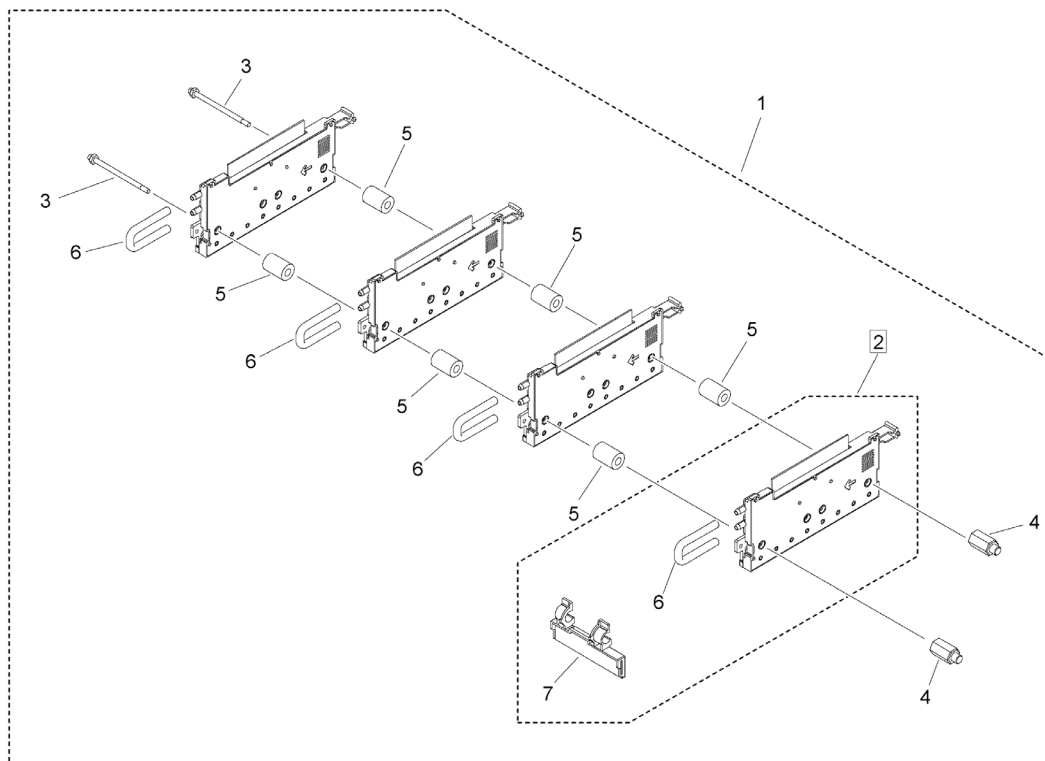


FIGURE & KEY NO.	PART NUMBER	R A N K	QTY	DESCRIPTION	SERIAL NUMBER /REMARKS
201	NPN		RF	PRINthead ASSEMBLY	
1	7FM90107000		1	PRINthead ASSEMBLY	
2	7FM90108000		4	PRINthead (SINGLE)	SEE NOTE [DP]
3	7FM90002000		2	SHAFT, SUPPORT	
4	7FM90003000		2	STOPPER	
5	7FM90004000		6	SPACER	
6	7FM90049000		4	TUBE	
7	7FM90067000		1	SCRAPER	

Figure 202 VALVE ASSEMBLY

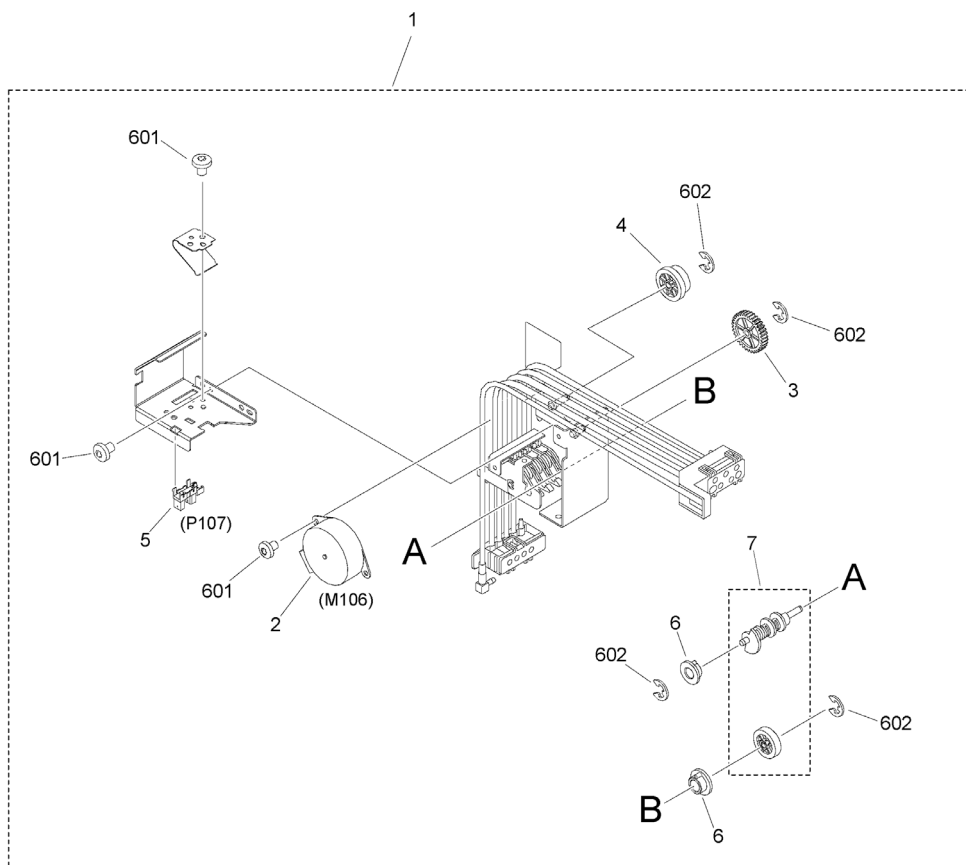


FIGURE & KEY NO.	PART NUMBER	R A N K	QTY	DESCRIPTION	SERIAL NUMBER /REMARKS
202	NPN		RF	VALVE ASSEMBLY	
1	7FM90079000		1	VALVE ASSEMBLY	
2	7FM90118000		1	MOTOR, STEPPING	M106
3	7FM90121000		1	GEAR, 34T	
4	7FM90122000		1	GEAR, 22T/45T	
5	7FM90153000		1	IC, PHOTO INTERRUPTER	P107
6	7FM90006000		2	BUSHING	
7	7FM90145000		1	CAM SHAFT SET	
601	N/A		8	SCREW,MACH.,TRUSS HEAD,M3X4	
602	N/A		4	RING, E	

Figure 203 ROLL DRIVE ASSEMBLY

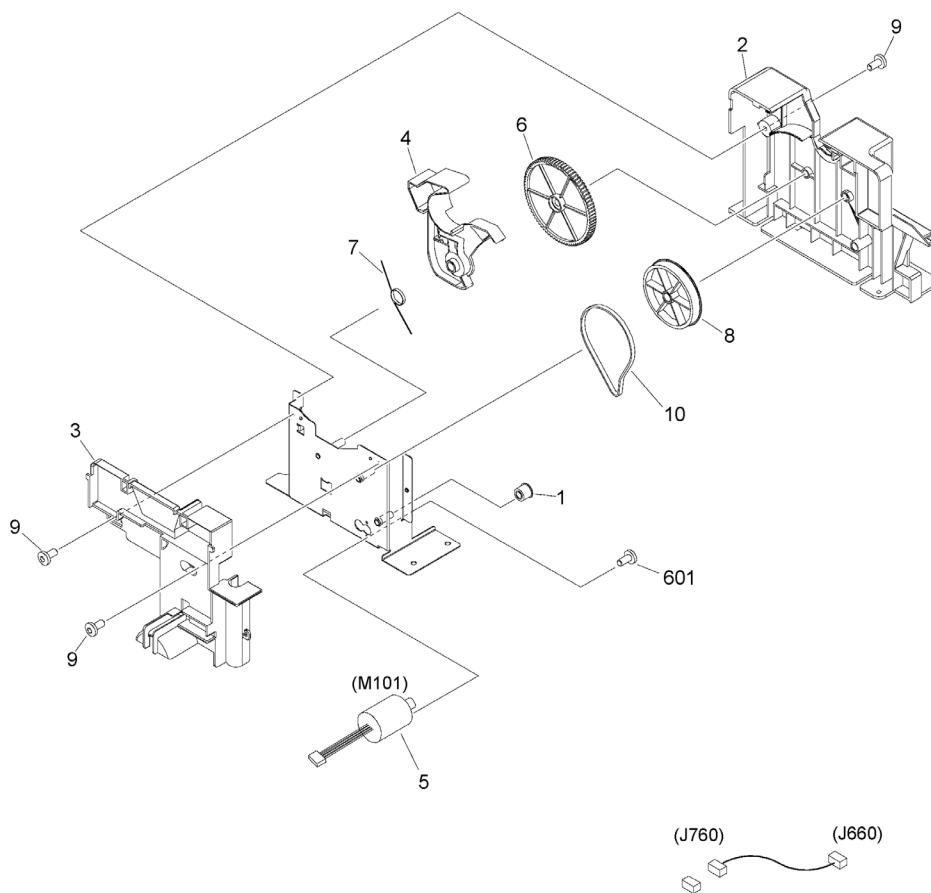


FIGURE & KEY NO.	PART NUMBER	R A N K	QTY	DESCRIPTION	SERIAL NUMBER /REMARKS
203	7FM90085000		1	ROLL DRIVE ASSEMBLY	
1	7FM90000000		1	ROLLER, TENSION	
2	7FM90034000		1	SUPPORT, SPOOL, LEFT	
3	7FM90035000		1	COVER, SPOOL SUPPORT, RIGHT	
4	7FM90036000		1	COVER, GEAR	
5	7FM90089000		1	MOTOR, DC	M101
6	7FM90124000		1	GEAR, 81T	
7	7FM90136000		1	SPRING, TORSION	
8	7FM90139000		1	GEAR, 17T/PULLEY, 97T	
9	N/A		4	SCREW, ROUND, M3X6	
10	7FM90168000		1	BELT, TIMING	
601	N/A		2	SCREW, MACH., TRUSS HEAD, M2.6X	

Figure 204 INK TANK HOLDER ASSEMBLY

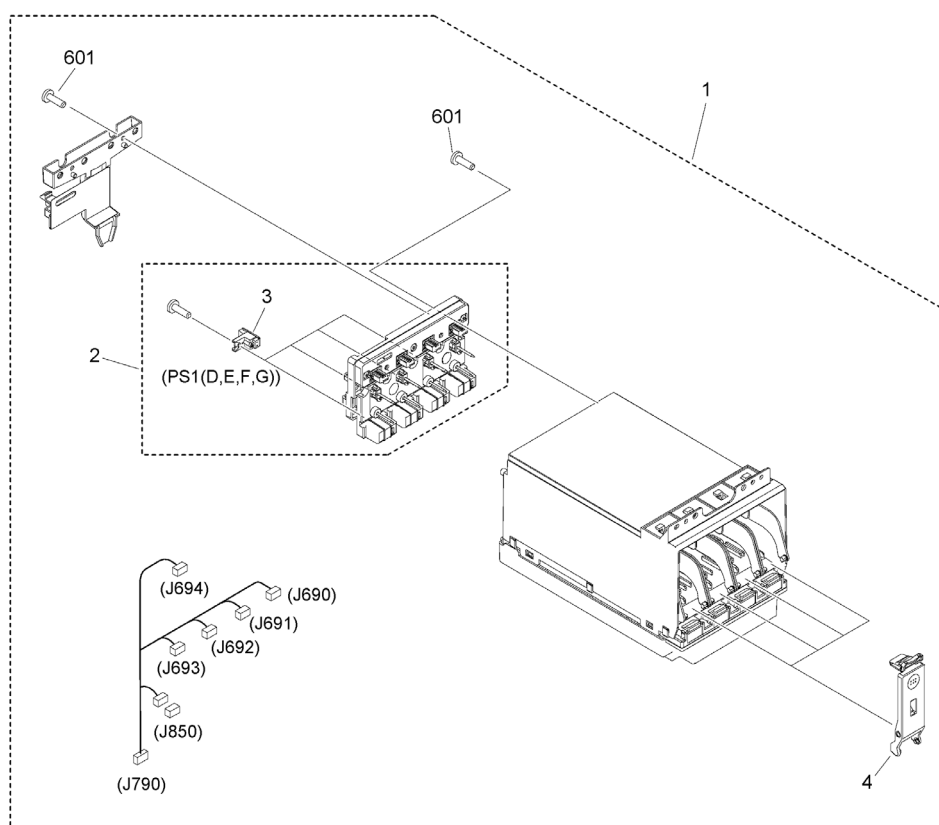


FIGURE & KEY NO.	PART NUMBER	R A N K	QTY	DESCRIPTION	SERIAL NUMBER /REMARKS
204	NPN		RF	INK TANK HOLDER ASSEMBLY	
1	7FM90109000		1	INK TANK HOLDER ASSEMBLY	
2	7FM90104000		1	INK TANK NEEDLE UNIT	
3	7FM90070000		4	SENSOR PCB	PS1(D, E, F, G)
4	7FM90008000		4	LEVER, INK TANK	
601	N/A		7	SCREW, TAPPING, M3X10	

Figure 300 TRANSPORT ASSEMBLY

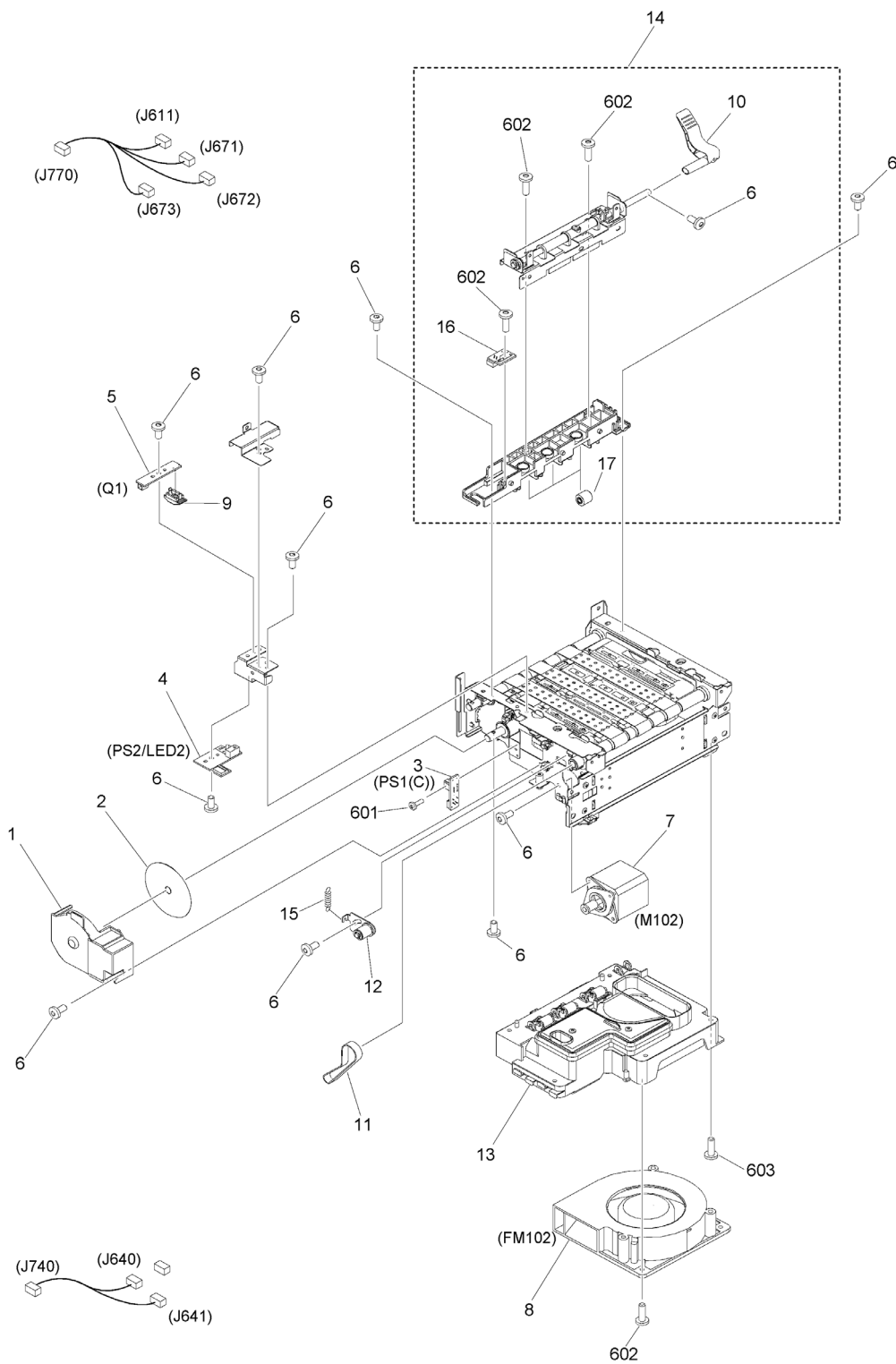


FIGURE & KEY NO.	PART NUMBER	RANK	QTY	DESCRIPTION	SERIAL NUMBER /REMARKS
300	7FM90209000		1	TRANSPORT ASSEMBLY	[DP]
1	7FM90007000		1	COVER, CODE WHEEL	
2	7FM90064000		1	WHEEL, CODE	
3	7FM90072000		1	CODE WHEEL SENSOR PCB UNIT	PS1(C)
4	7FM90075000		1	TOF SENSOR UNIT,1	PS2/LED2
5	7FM90076000		1	TOF SENSOR UNIT,2	Q1
6	N/A		30	SCREW, ROUND, M3X6	
7	7FM90119000		1	MOTOR, STEPPING	M102
8	7FM90068000		1	FAN	FM102
9	7FM90027000		1	COVER, TOF SENSOR	
10	7FM90028000		1	LEVER, RELEASE	
11	7FM90029000		1	BELT, TIMING, COGGED	
12	7FM90069000		1	TENSION UNIT	
13	7FM90080000		1	DUCT UNIT	
14	7FM90081000		1	PINCH UNIT	
15	7FM90135000		1	SPRING, TENSION	
16	7FM90073000		1	SENSOR PCB	
17	7FM90066000		3	ROLLER, PINCH	
601	N/A		2	SCREW, MACH., TRUSS HEAD, M2X6	
602	N/A		8	SCREW, TAPPING, M3X10	
603	N/A		4	SCREW, MACH., TRUSS HEAD, M3X14	

Figure 301 PAPER GUIDE ASSEMBLY

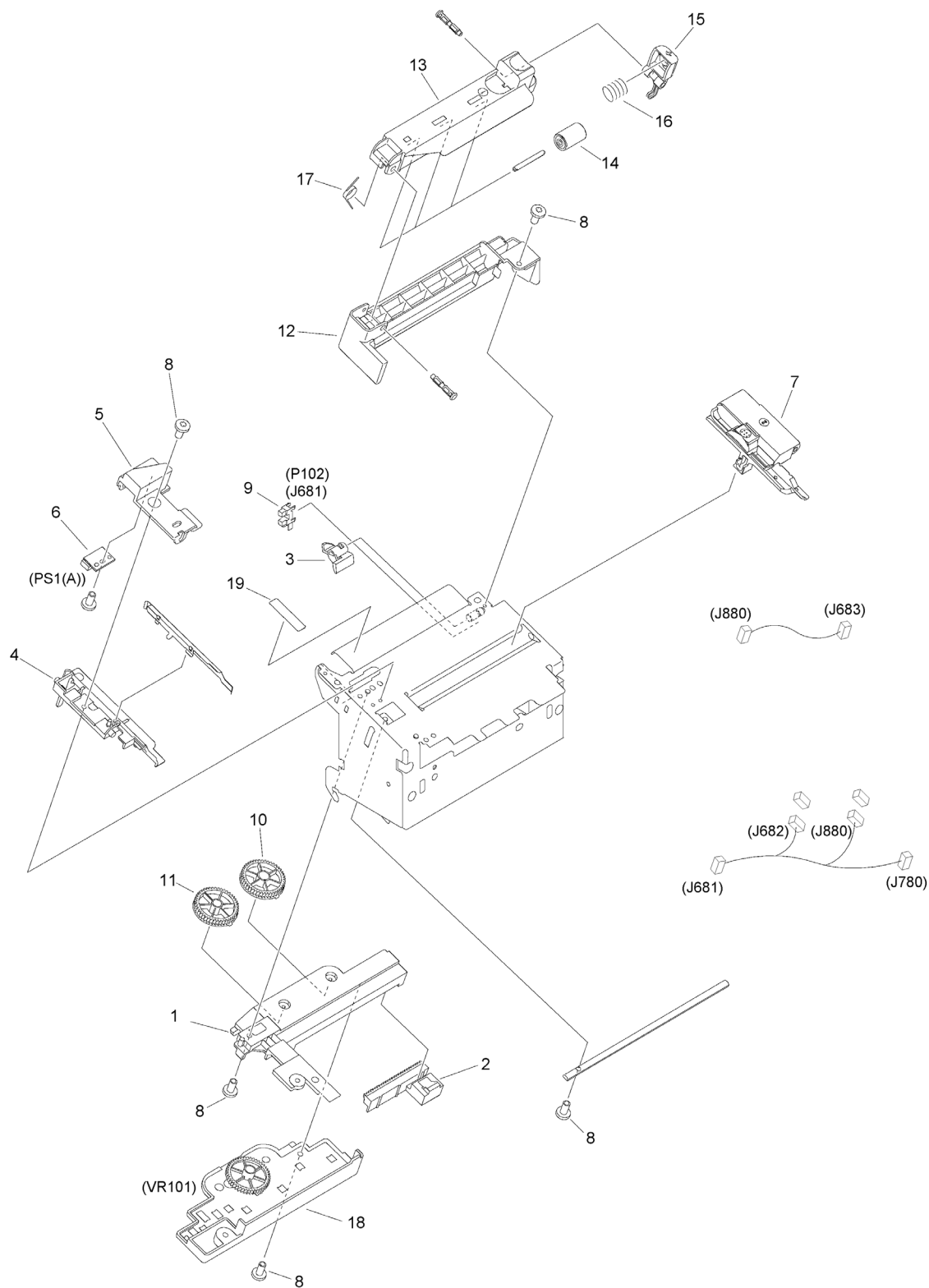


FIGURE & KEY NO.	PART NUMBER	R A N K	QTY	DESCRIPTION	SERIAL NUMBER /REMARKS
301	7FM90087000		1	PAPER GUIDE ASSEMBLY	
1	7FM90044000		1	BASE, RACK	
2	7FM90045000		1	RACK	
3	7FM90046000		1	FLAG, SENSOR	
4	7FM90038000		1	GUIDE, SIDE, LEFT	
5	7FM90039000		1	GUIDE, UPPER, LEFT	
6	7FM90073000		1	SENSOR PCB	PS1(A)
7	7FM90088000		1	PAPER WIDTH GUIDE UNIT	
8	N/A		6	SCREW, ROUND, M3X6	
9	7FM90153000		1	IC, PHOTO INTERRUPTER	P102
10	7FM90126000		1	GEAR, 25T/45T	
11	7FM90125000		1	GEAR, 25T/45T	
12	7FM90040000		1	COVER, GUIDE	
13	7FM90041000		1	GUIDE, ROLLER	
14	7FM90042000		3	ROLLER, GUIDE	
15	7FM90043000		1	LEVER, PAPER RETAINING RELEASE	
16	7FM90137000		1	SPRING, COMPRESSION	
17	7FM90138000		1	SPRING, TORSION	
18	7FM90090000		1	SENSOR UNIT, VOLUME	VR101
19	7FM90010000		1	SHEET, GUIDE	

Figure 900 TOOL TABLE

NOTE:Key No. 3 consists 100sheets/set. NOTE:Key No. 4 consists 20sheets/set. NOTE:Key No. 5 consists 12pcs/set.

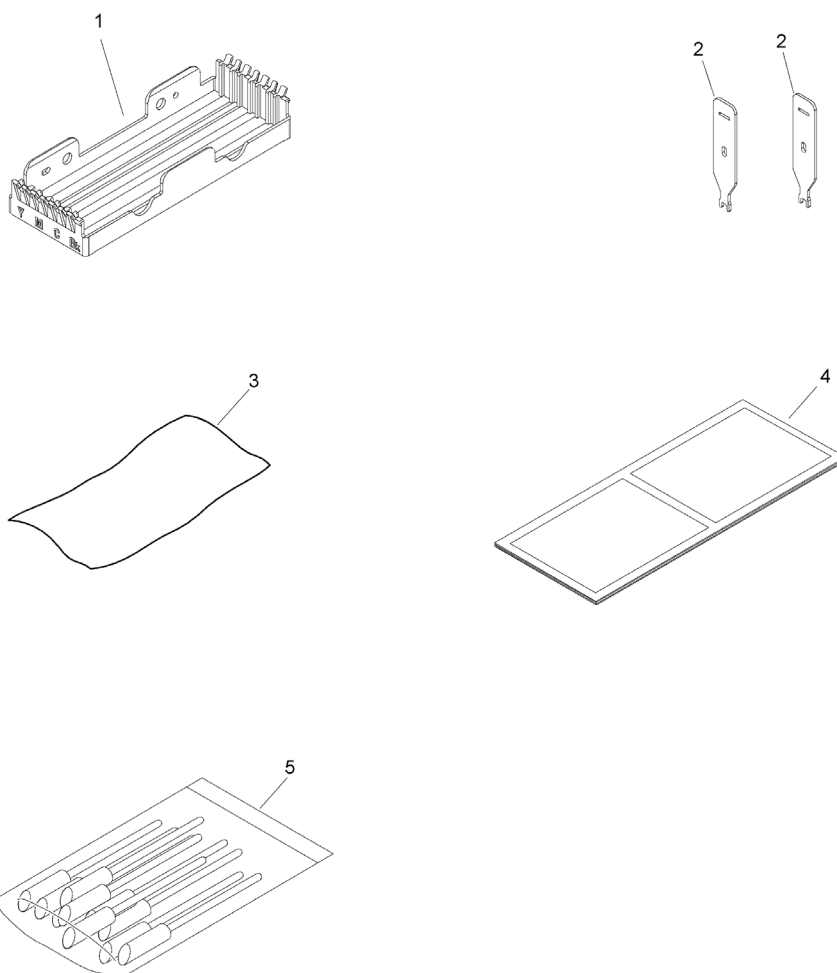


FIGURE & KEY NO.	PART NUMBER	R A N K	QTY	DESCRIPTION	SERIAL NUMBER /REMARKS
900	NPN		RF	TOOL TABLE	
1	7FM90048000		1	TOOL, PRINthead	
2	7FM90021000		2	WRENCH	
3	7FM90140000		1	LINT-FREE TOWEL (100SHEETS)	100 sheets/set
4	7FM90143000		1	PAPER, TEST PRINT	20 sheets/set
5	7FM90141000		1	CLEANING STICK SET	12 pcs/set